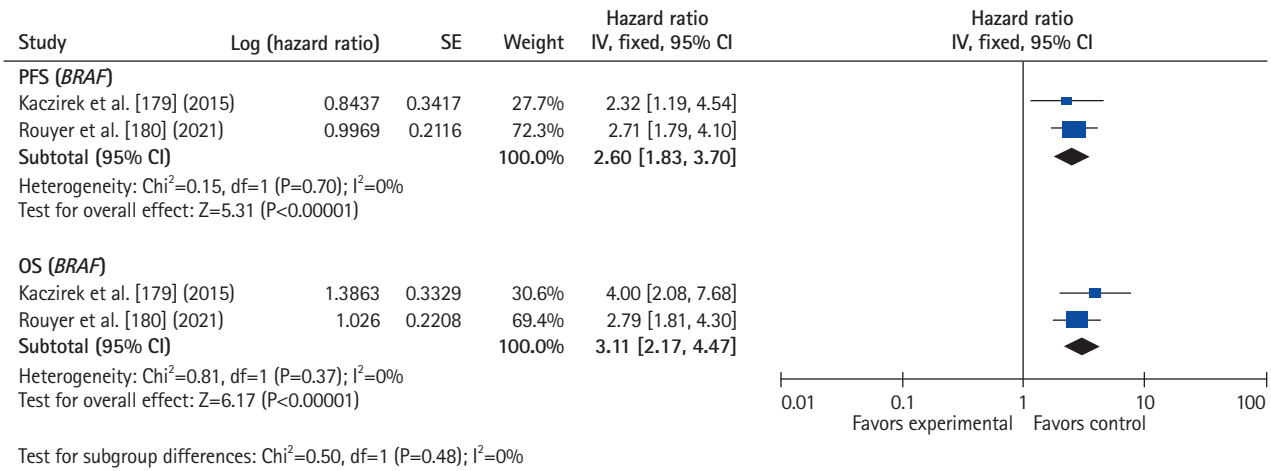


Supplementary Fig. 15. Forest plots of progression-free survival (PFS) and overall survival (OS). (A) PFS and (B) OS according to KRAS status. (C) PFS and OS according to NRAS status. (D) PFS and OS according to BRAF status. SE, standard error; IV, inverse variance; Fixed, fixed-effect model; CI, confidence interval; WT, wide type; MT, mutant type; df, degree of freedom.



Supplementary Fig. 15. (Continued).