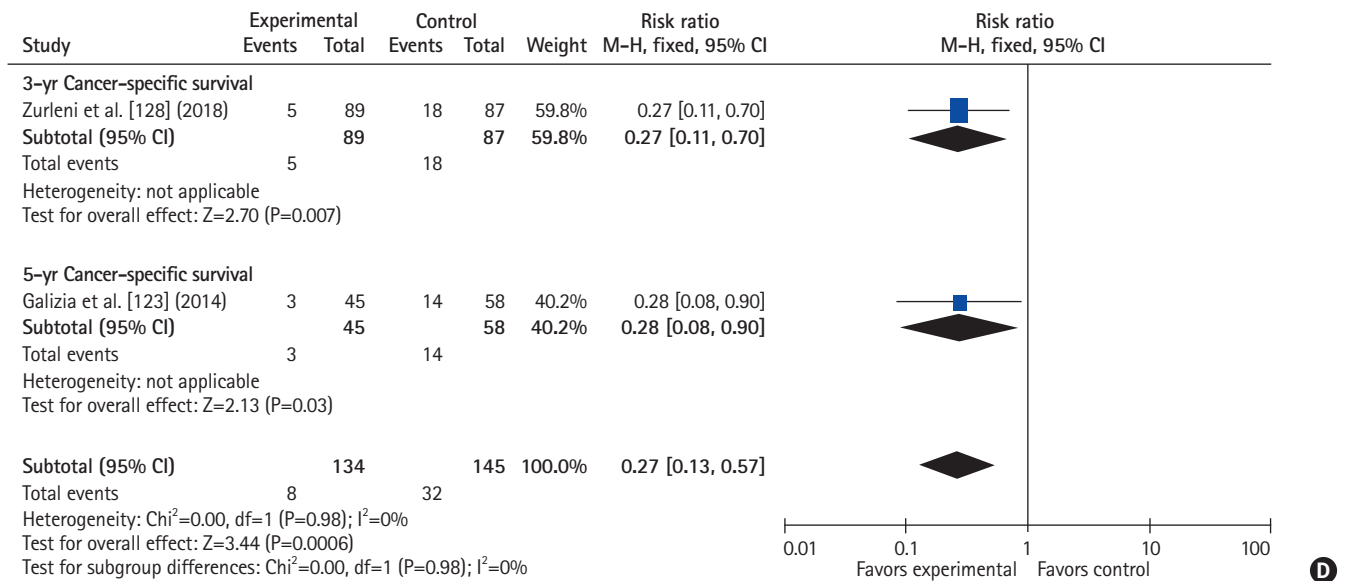
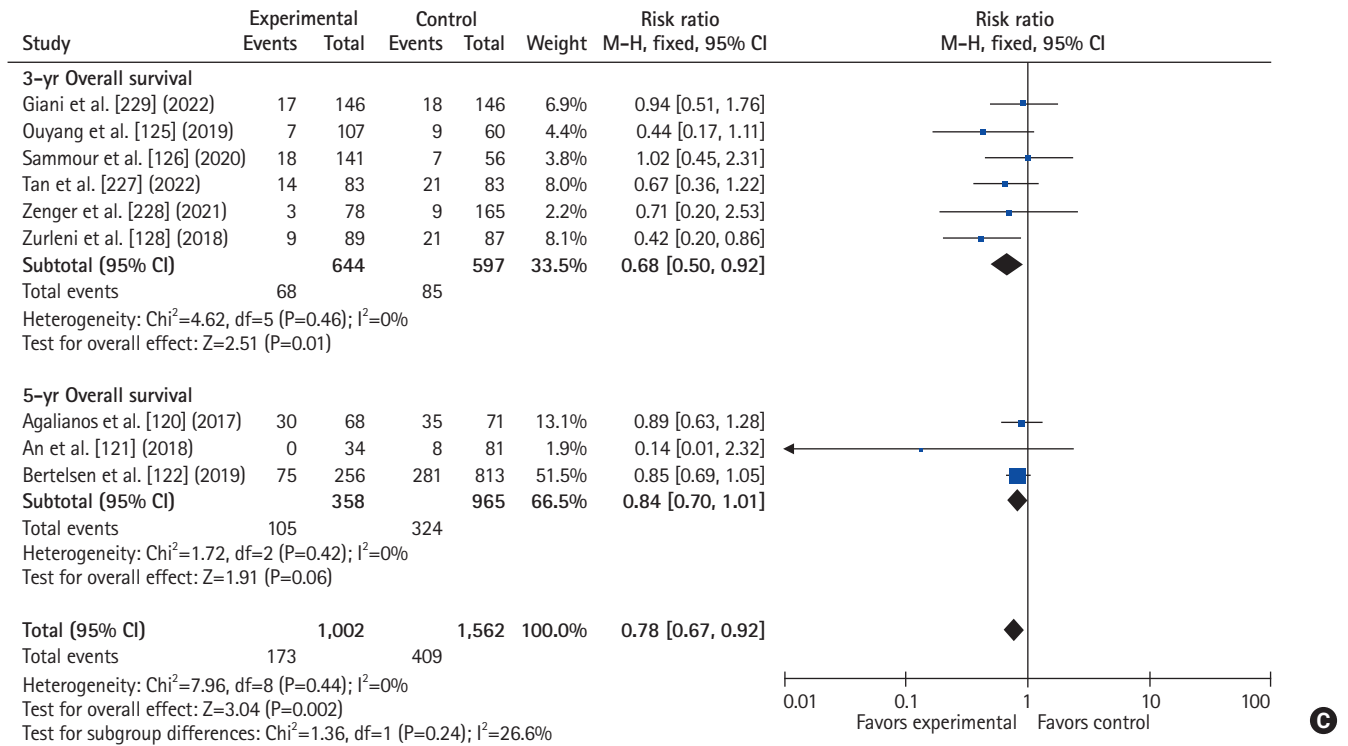


Supplementary Fig. 8. Forest plots of 3- and 5-year (A) recurrence rate, (B) disease-free survival, (C) overall survival, and (D) cancer-specific survival in extensive lymphadenectomy (D3 lymph node dissection or complete mesocolic extension/central vessel ligation) versus no extensive lymphadenectomy for right-sided colon cancer. M-H, Mantel-Haenszel test; Fixed, fixed-effect model; CI, confidence interval; df, degree of freedom.



Supplementary Fig. 8. (Continued).